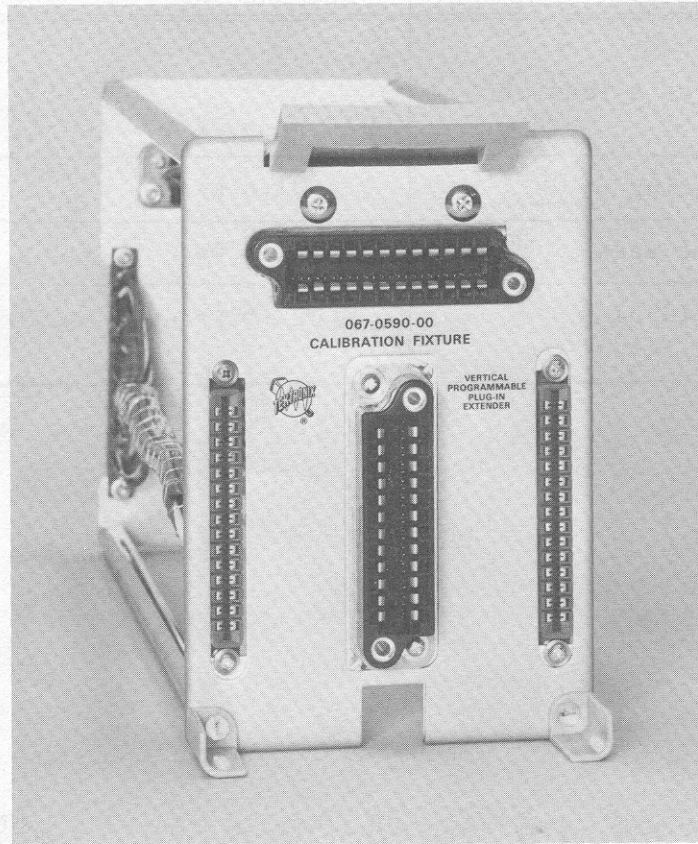


067-0590-00 CALIBRATION FIXTURE

Programmable Vertical Plug-In Extender



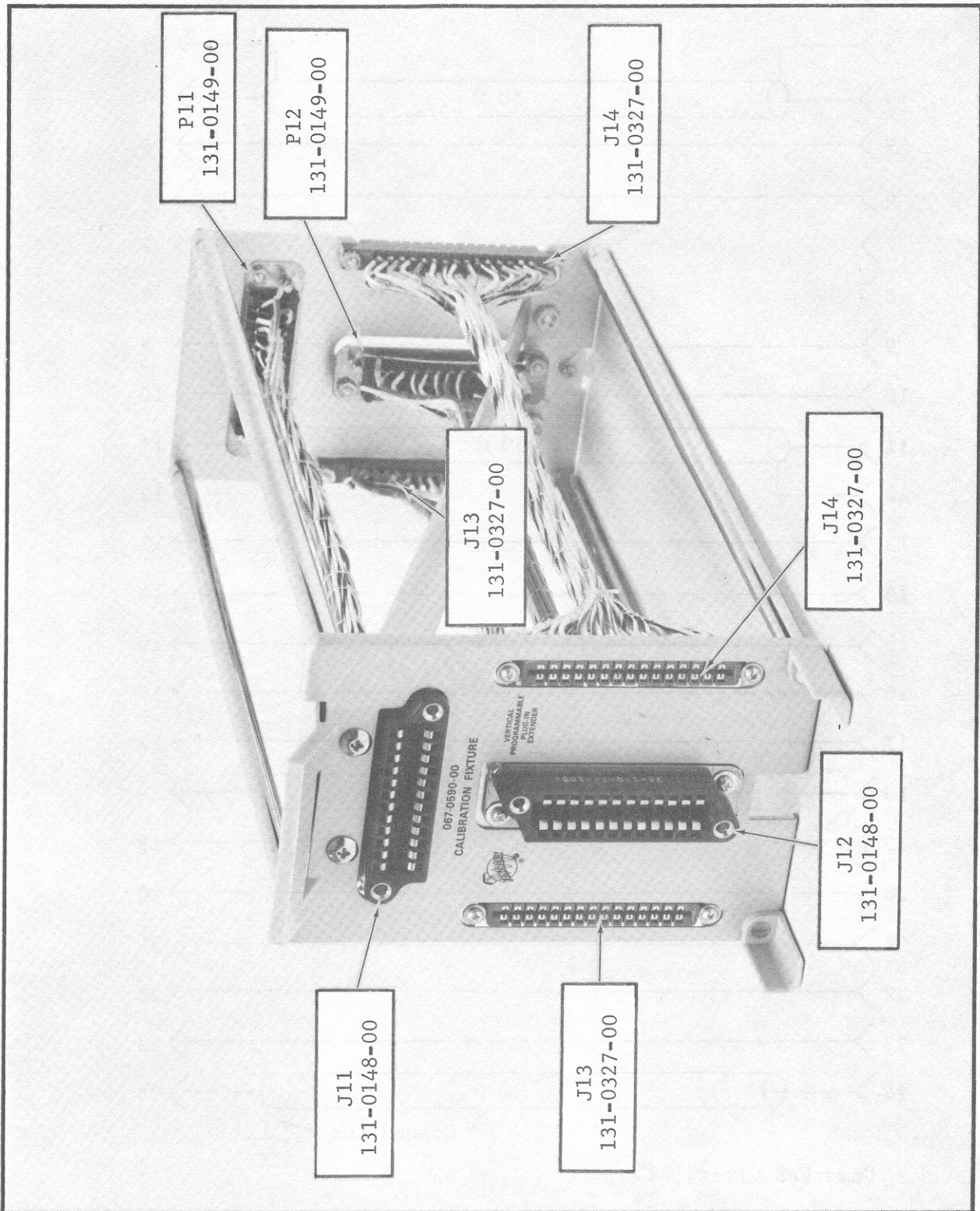
The 067-0590-00 Plug-In Extender is designed primarily for use with the Tektronix Type 568 or R568 Oscilloscope when calibrating or troubleshooting the Type 3S5 or 3S6 Programmable Vertical. The Extender can also be used with the Type 568 or other 560-Series Oscilloscopes to extend digital vertical plug-in units, as well as non-digital vertical and time-base units.

The Extender has a support and locking mechanism on the front panel, thus eliminating the need to externally support the extended plug-in unit. The Extender does not lock into the oscilloscope, therefore rackmount oscilloscopes should not be tilted when the Extender is used.

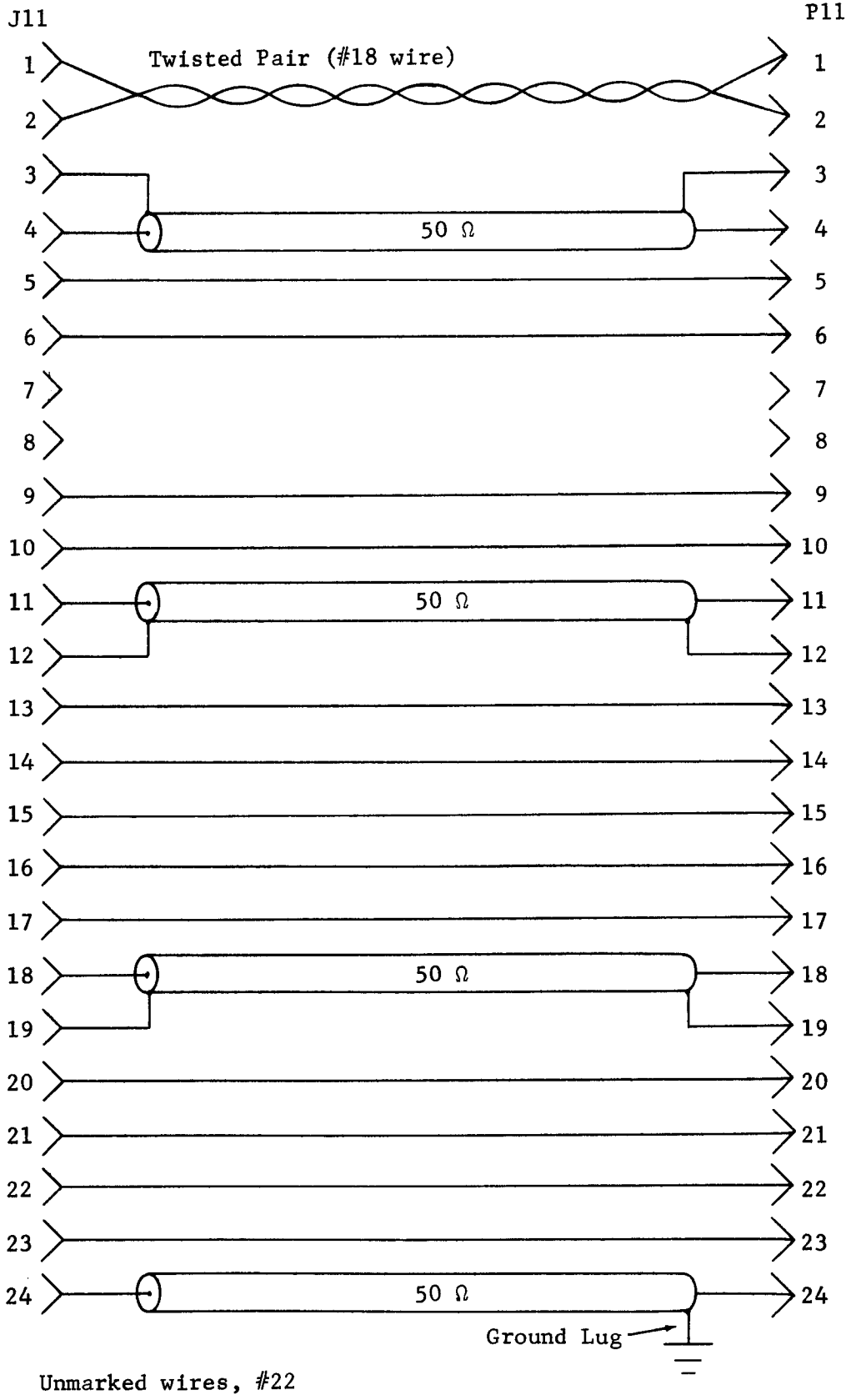
ELECTRICAL CHARACTERISTICS

CHARACTERISTIC	PERFORMANCE REQUIREMENT	SUPPLEMENTAL INFORMATION
Cable Delay (viewed as a loss of lead time)		
Internal Triggering	≈ 1.6 ns	
Strobe from Time Base	≈ 1.6 ns	
Strobe to Head (3S6)	≈ 1.6 ns	

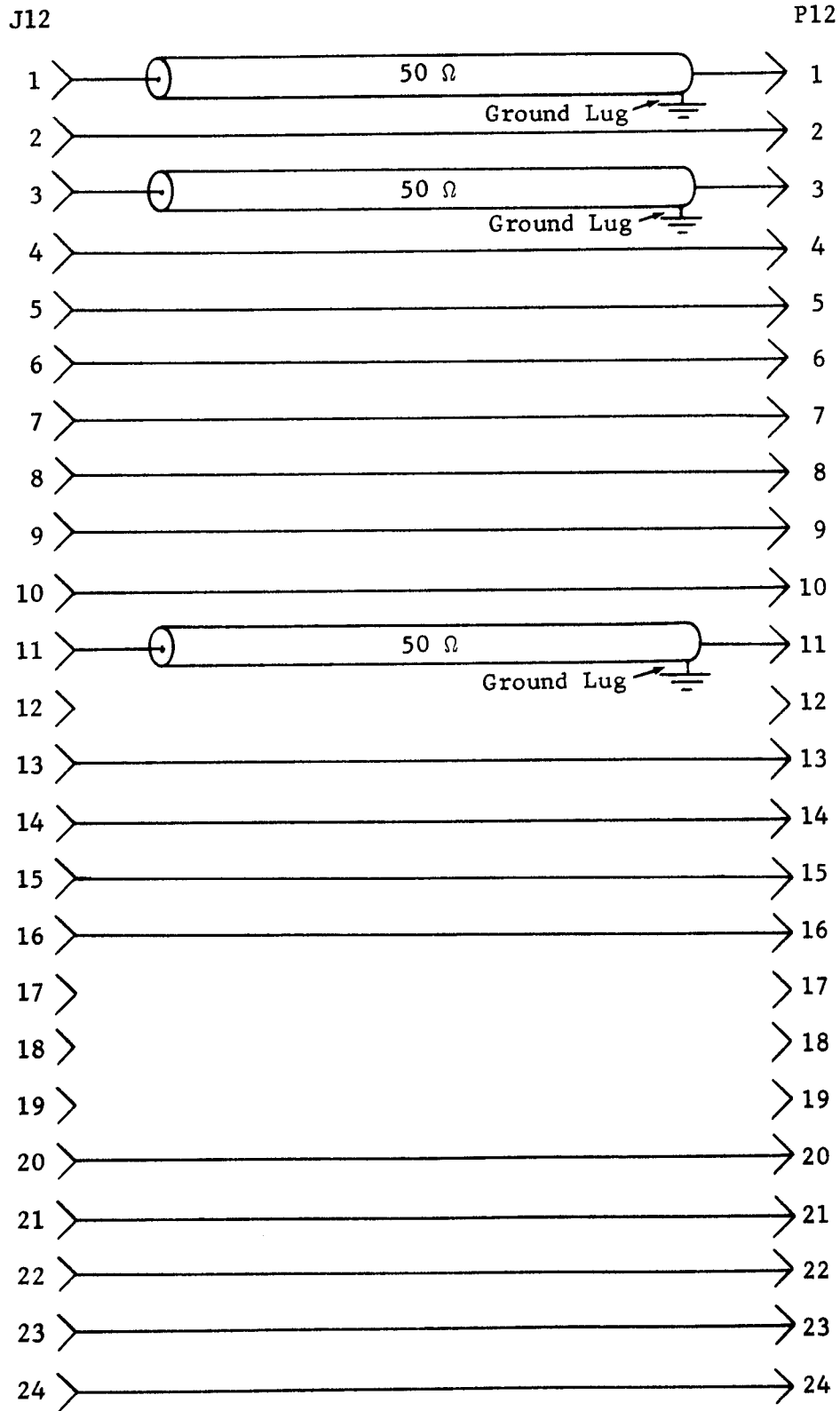
LOCATION OF CONNECTORS



POWER CONNECTORS

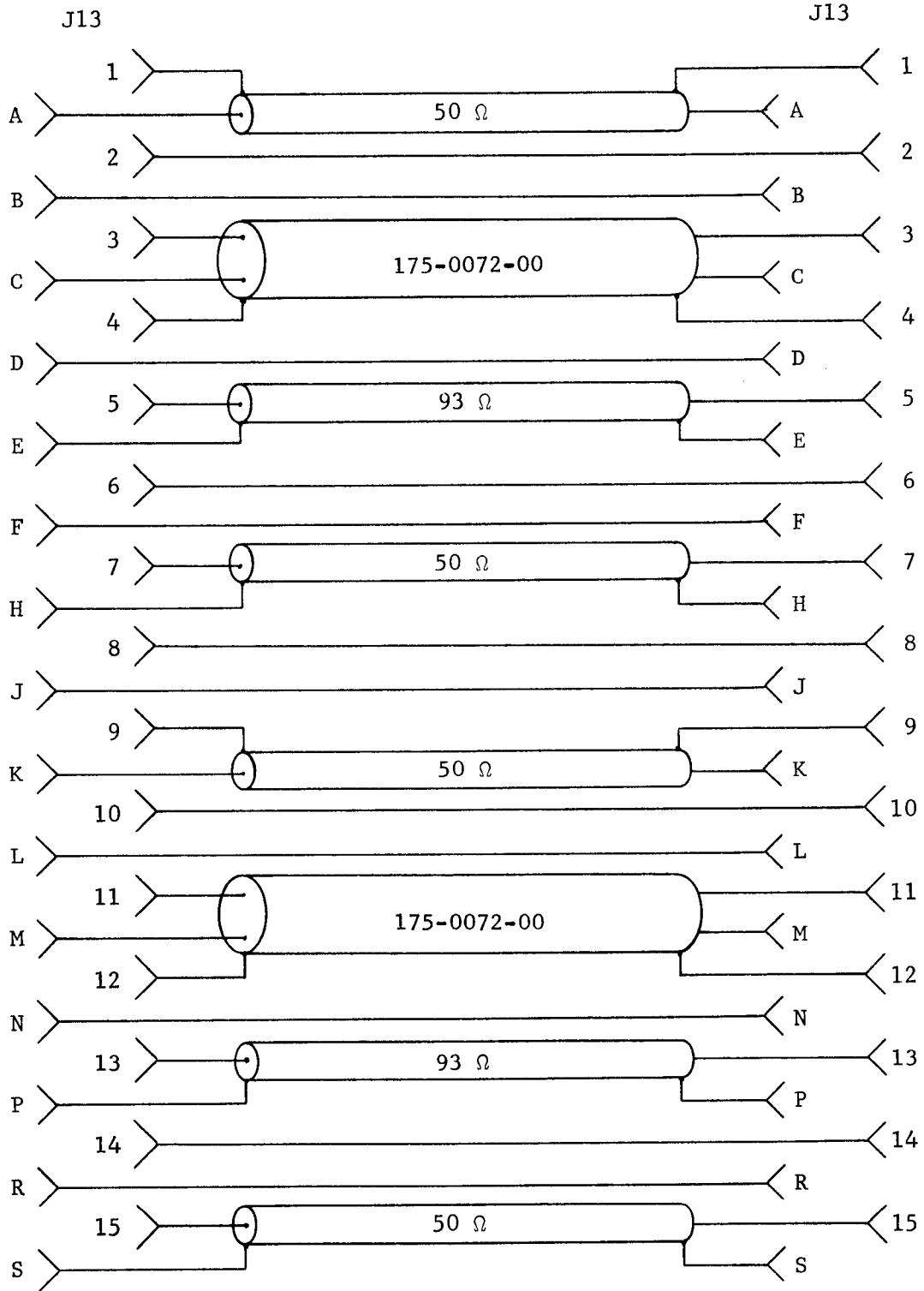


DIGITAL CONNECTORS



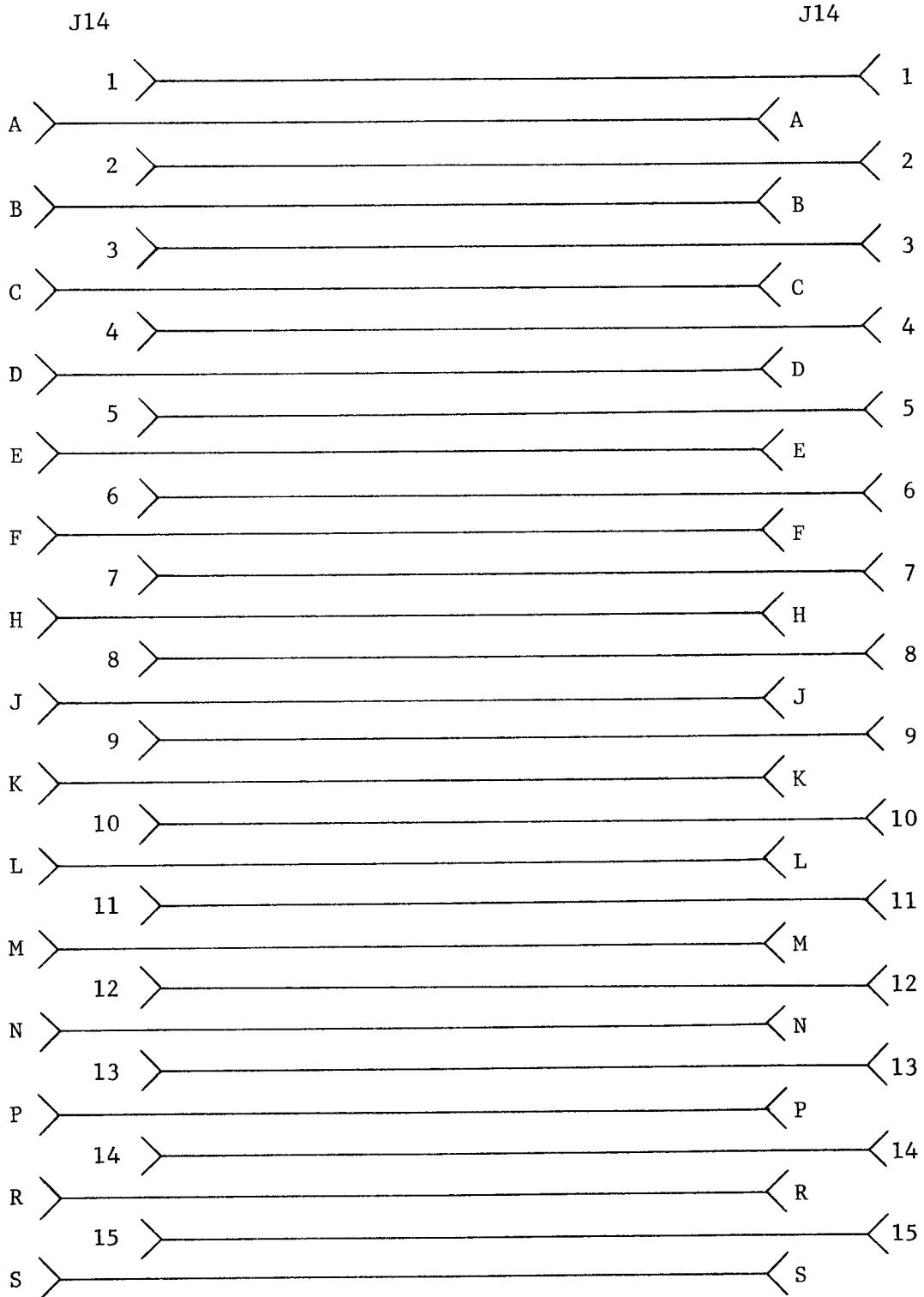
Unmarked wires, #22

SAMPLING HEAD CONNECTORS

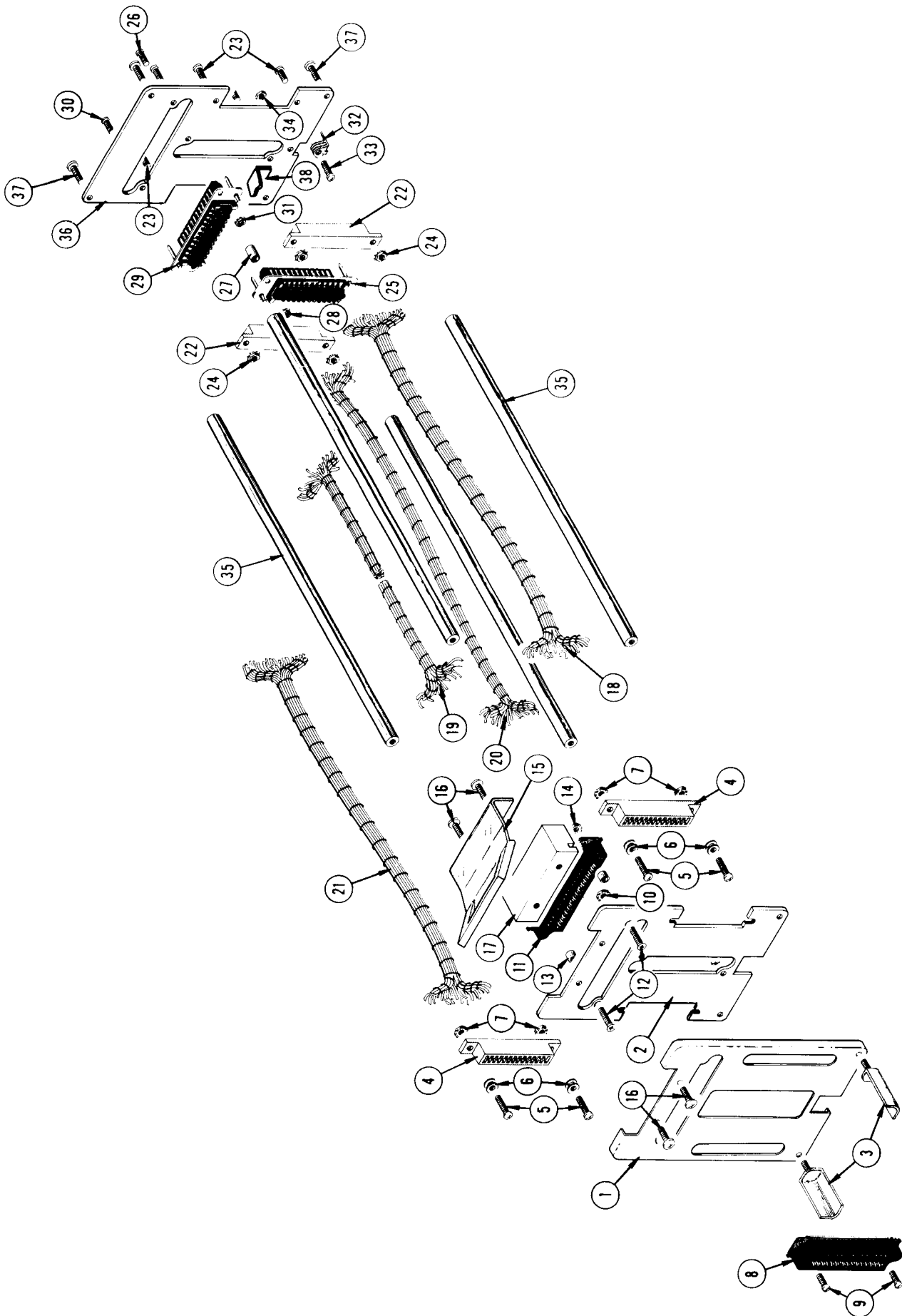


Unmarked wires, #22

PROGRAMMING CONNECTORS



All wires #22



EXPLODED VIEW

Fig. & Index No.	Tektronix Part No.	Serial/Model No. Eff Disc	Q					Description
			t	y	1	2	3	
1	333-1192-01		1					PANEL, front
2	386-1537-00		1					SUBPANEL, front
3	351-0192-00		2					GUIDE, plug-in
4	131-0327-00		2					CONNECTOR, 30 pin contact, female
	- - - - -		-					mounting hardware for each: (not included
	- - - - -		-					w/connector)
5	211-0016-00		2					SCREW, 4-40 x 0.625 inch, RHS
6	361-0133-00		2					SPACER, sleeve, spool shaped
7	210-0586-00		2					NUT, keps, 4-40 x 0.25 inch
8	131-0148-00		1					CONNECTOR, 24 contact, female
	- - - - -		-					mounting hardware: (not included
	- - - - -		-					w/connector)
9	211-0015-00		2					SCREW, 4-40 x 0.50 inch, RHS
10	210-0586-00		2					NUT, keps, 4-40 x 0.25 inch
11	131-0148-00		1					CONNECTOR, 24 contact, female
	- - - - -		-					mounting hardware: (not included
	- - - - -		-					w/connector)
12	211-0086-00		2					SCREW, 4-40 x 0.75 inch, 100° csk, FHS
13	166-0030-00		2					SPACER, 0.188 inch long
14	210-0586-00		2					NUT, keps, 4-40 x 0.25 inch
15	105-0114-00		1					LATCH, extender
	- - - - -		-					mounting hardware: (not included w/latch)
16	212-0068-00		4					SCREW, 8-32 x 0.312 inch, THS
17	361-0251-00		1					SPACER, latch
18	179-1355-00		1					CABLE HARNESS, programing
19	179-1350-00		1					CABLE HARNESS, power
20	179-1351-00		1					CABLE HARNESS, digital
21	179-1352-00		1					CABLE HARNESS, sampling head
22	131-0327-00		2					CONNECTOR, 30 pin contact, female
	- - - - -		-					mounting hardware for each: (not included
	- - - - -		-					w/connector)
23	211-0014-00		2					SCREW, 4-40 x 0.50 inch, PHS
24	210-0586-00		2					NUT, keps, 4-40 x 0.25 inch

EXPLODED VIEW (cont)

Fig. & Index No.	Tektronix Part No.	Serial/Model Eff	No. Disc	Q					Description
				†	γ	1	2	3	
25	131-0149-00			1					CONNECTOR, 24 contact, male
	- - - - -			-					mounting hardware: (not included
	- - - - -			-					w/connector)
26	211-0016-00			2					SCREW, 4-40 x 0.625 inch, RHS
27	166-0032-00			2					SPACER, 0.312 inch long
	210-0202-00			1					LUG, solder, SE #4 (not shown)
28	210-0586-00			2					NUT, keps, 4-40 x 0.25 inch
29	131-0149-00			1					CONNECTOR, 24 contact, male
	- - - - -			-					mounting hardware: (not included
	- - - - -			-					w/connector)
30	211-0110-00			2					SCREW, 4-40 x 0.312 inch, PHS
31	210-0586-00			2					NUT, keps, 4-40 x 0.25 inch
32	351-0037-00			1					GUIDE, plug-in
	- - - - -			-					mounting hardware: (not included w/guide)
33	211-0012-00			1					SCREW, 4-40 x 0.375 inch, PHS
34	210-0406-00			1					NUT, hex., 4-40 x 0.188 inch
35	384-0615-00			4					ROD, spacing
36	386-1540-00			1					PANEL, rear
	- - - - -			-					mounting hardware: (not included w/panel)
37	212-0004-00			4					SCREW, 8-32 x 0.312 inch, PHS
38	386-1614-00			1					SUPPORT, frame
	- - - - -			-					mounting hardware: (not included w/support)
	212-0008-00			2					SCREW, 8-32 x 0.312
	210-0458-00			2					NUT, keps, 8-32 x 0.344 inch

STANDARD ACCESSORIES

388-0805-00	2	CIRCUIT BOARD, connector (not shown)
062-1051-00	1	MANUAL, instruction (not shown)